

# CAI 2\*/3\*

# Bühl GER 2023



**HERZLICH WILLKOMMEN BEIM**

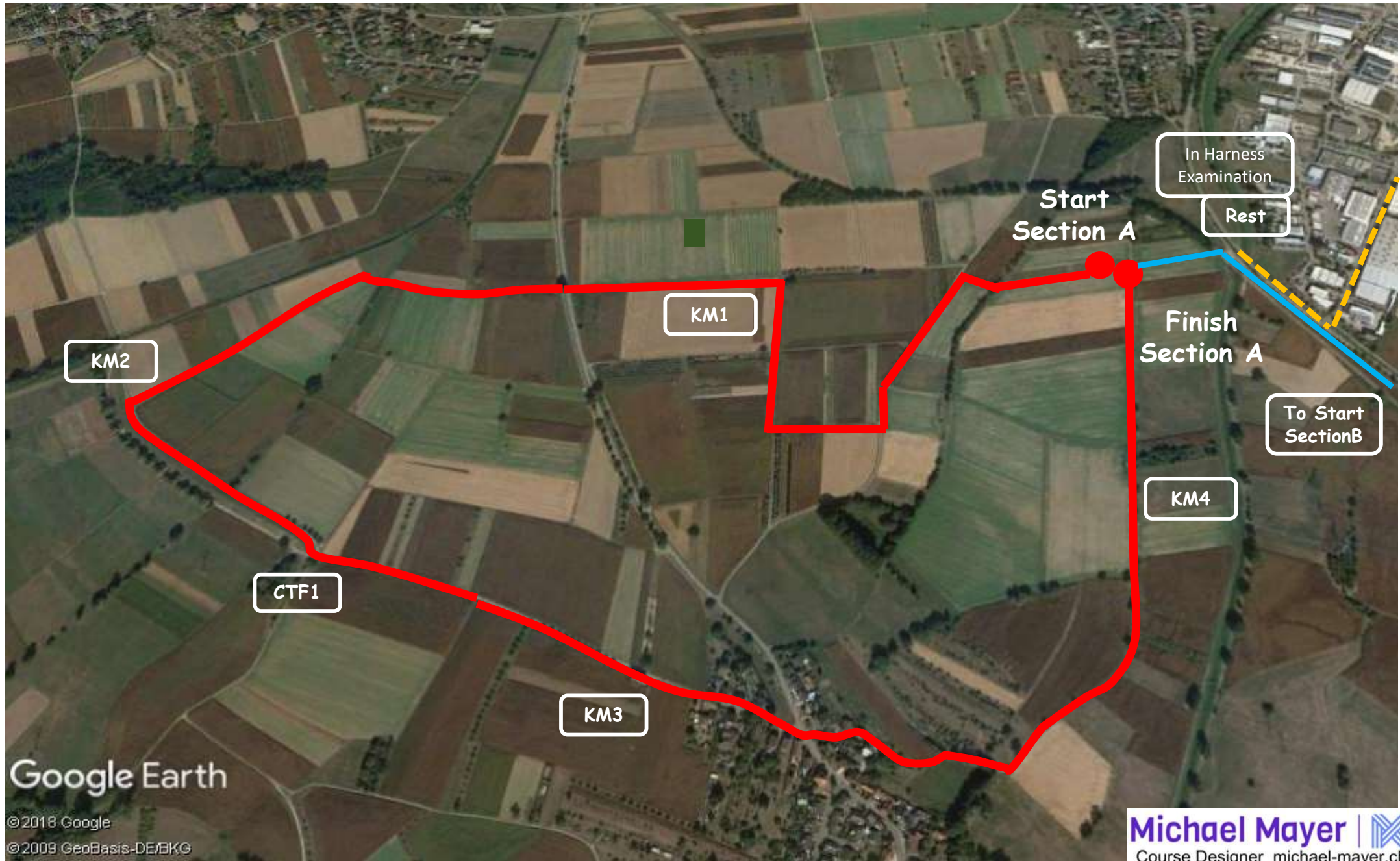
**REIT- UND FAHRVEREIN ST. LEONHARD E.V. - BÜHL**



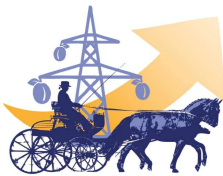
# Marathon Info

# Section A

Distance: 4400m





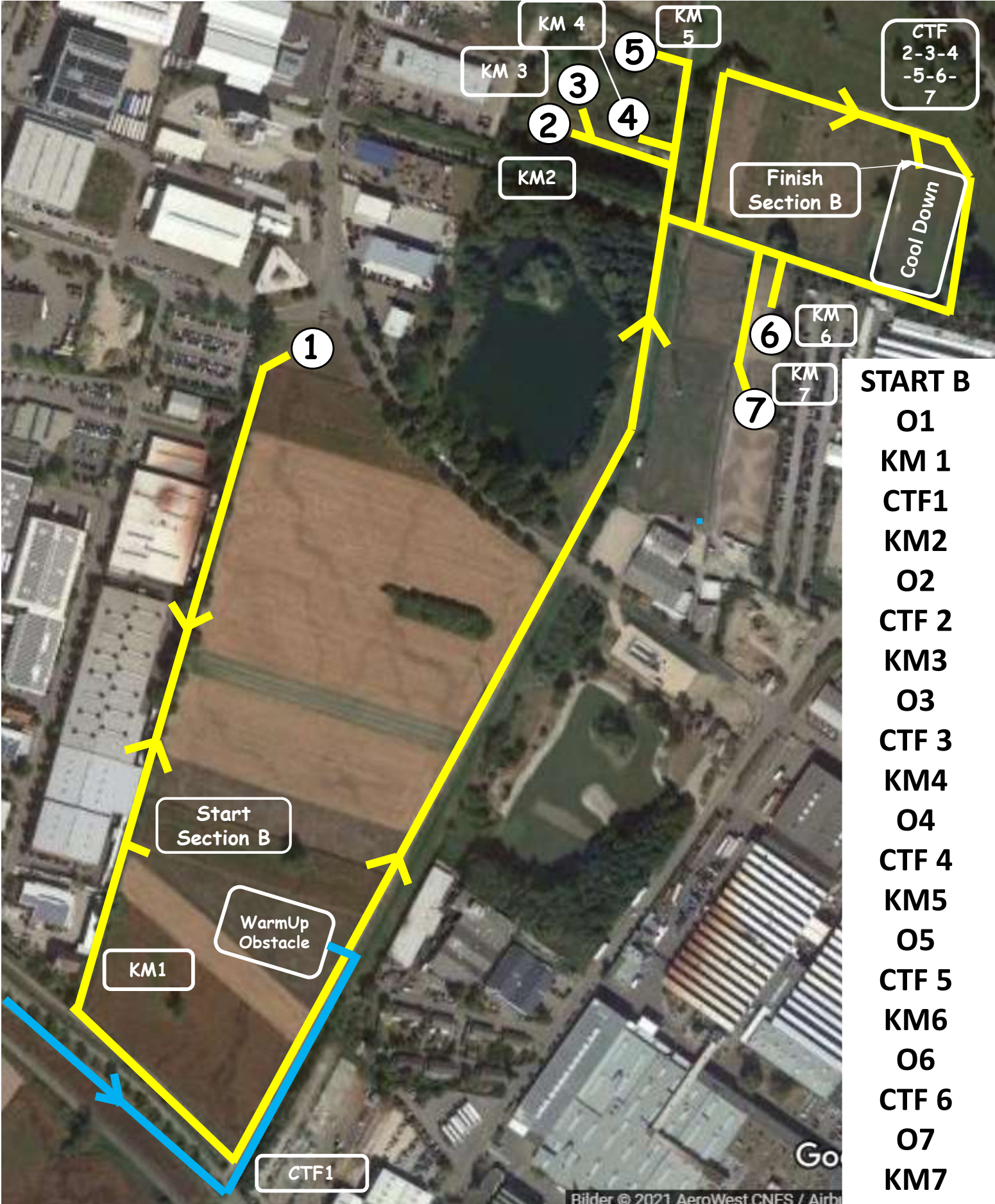


CAI\*\*\* Bühl  
07. - 11.06.23

# Section B

## CAI 3\*

Distance: 7480m



- START B**
- O1
  - KM 1
  - CTF1
  - KM2
  - O2
  - CTF 2
  - KM3
  - O3
  - CTF 3
  - KM4
  - O4
  - CTF 4
  - KM5
  - O5
  - CTF 5
  - KM6
  - O6
  - CTF 6
  - O7
  - KM7
  - CTF7
  - FINISH B**



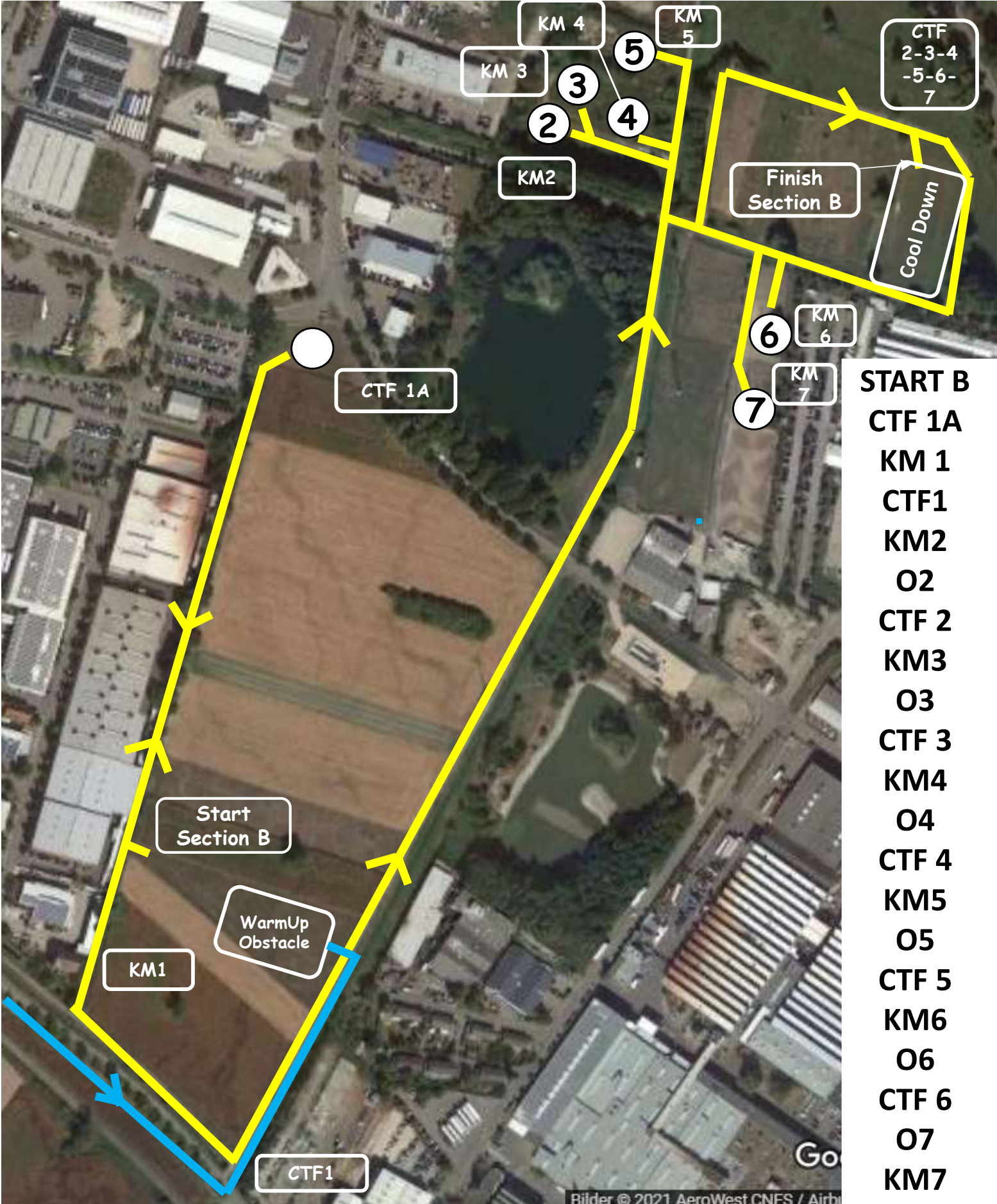


CAI\*\*\* Bühl  
07. - 11.06.23

# Section B

## CAI 2\* / CAIJ 2\*

Distance: 7480m



- START B
- CTF 1A
- KM 1
- CTF1
- KM2
- O2
- CTF 2
- KM3
- O3
- CTF 3
- KM4
- O4
- CTF 4
- KM5
- O5
- CTF 5
- KM6
- O6
- CTF 6
- O7
- KM7
- CTF7
- FINISH B

Bilder © 2021 AeroWest, CNES / Airbus



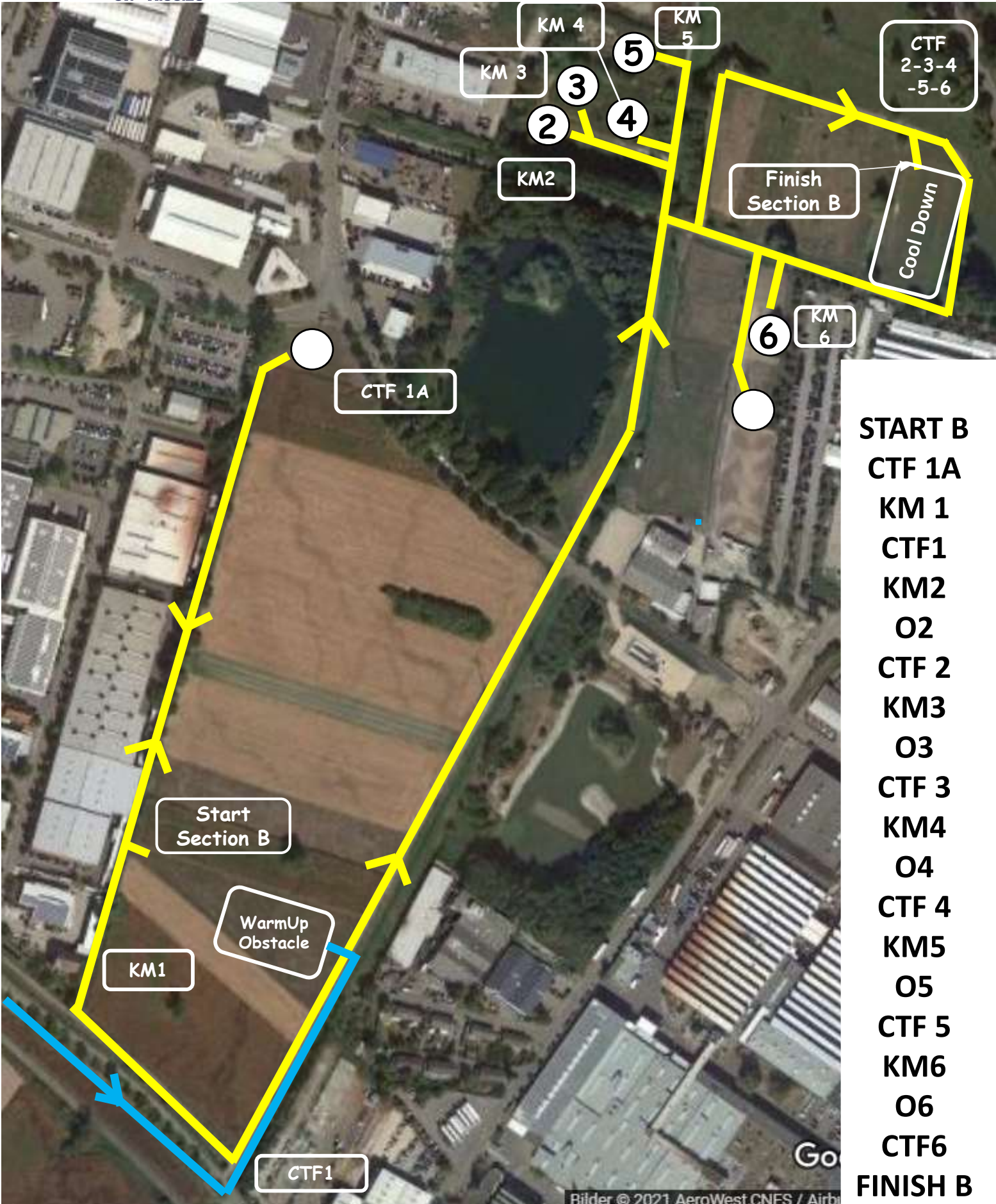


CAI\*\*\* Bühl  
07. - 11.06.23

# Section B

## CAICh 2\*

Distance: 6530m



- START B
- CTF 1A
- KM 1
- CTF1
- KM2
- O2
- CTF 2
- KM3
- O3
- CTF 3
- KM4
- O4
- CTF 4
- KM5
- O5
- CTF 5
- KM6
- O6
- CTF6
- FINISH B

Bilder © 2021 AeroWest, CNES / Airbus



**CAI 3\* Bühl GER  
Marathon  
10.06.2023**

**Michael Mayer** |   
Course Designer michael-mayer.ch

**Section Times**

Competition: CAI 3\* H1-H2-P1-P2

**HORSES**

Section	Distance	Pace	Speed	MT	TA		CTF
<b>In Harness Examination</b>							
<b>A</b>	4400 m	free	13 km/h	<b>18 min 18 sec</b>	<b>20 min 18 sec</b>		1
<b>Halt</b>				10 min			
<b>Warm Up Obstacle</b>				2 min			
<b>B O 1-7</b>	7480 m	free → after H7 walk or trot	14 km/h	<b>29 min 03 sec</b>	<b>32 min 03 sec</b>		1 - 7
<b>CoolDown</b>				10 min	15 min		
<b>In Harness Examination</b>							

**PONYS**

Section	Distance	Pace	Speed	MT	TA		CTF
<b>In Harness Examination</b>							
<b>A</b>	4400 m	free	12 km/h	<b>20 min 00 sec</b>	<b>22 min 00 sec</b>		1
<b>Halt</b>				10 min			
<b>Warm Up Obstacle</b>				2 min			
<b>B O 1-7</b>	7480 m	free → after H7 walk or trot	13 km/h	<b>31 min 31 sec</b>	<b>34 min 31 sec</b>		1 - 7
<b>CoolDown</b>				10 min	15 min		
<b>In Harness Examination</b>							

TA = Time Allowed / MT = Minimum Time / CTF = Compulsory Turning Flags



**CAI 2\* CAIJ 2\* Bühl GER  
Marathon  
10.06.2023**

**Michael Mayer** |   
Course Designer michael-mayer.ch

**Section Times**

Competition: CAI 2\* H1-H2-P1-P2 CAIJ 2\* P1

**HORSES**

Section	Distance	Pace	Speed	MT	TA		CTF
<b>In Harness Examination</b>							
<b>A</b>	4400 m	free	13 km/h	<b>18 min 18 sec</b>	<b>20 min 18 sec</b>		1
<b>Halt</b>				10 min			
<b>Warm Up Obstacle</b>				2 min			
<b>B O 2-7</b>	7480 m	free → after H7 walk or trot	14 km/h	<b>29 min 03 sec</b>	<b>32 min 03 sec</b>		1A - 7
<b>CoolDown</b>				10 min	15 min		
<b>In Harness Examination</b>							

**PONYS**

Section	Distance	Pace	Speed	MT	TA		CTF
<b>In Harness Examination</b>							
<b>A</b>	4400 m	free	12 km/h	<b>20 min 00 sec</b>	<b>22 min 00 sec</b>		1
<b>Halt</b>				10 min			
<b>Warm Up Obstacle</b>				2 min			
<b>B O 2-7</b>	7480 m	free → after H7 walk or trot	13 km/h	<b>31 min 31 sec</b>	<b>34 min 31 sec</b>		1A - 7
<b>CoolDown</b>				10 min	15 min		
<b>In Harness Examination</b>							

TA = Time Allowed / MT = Minimum Time / CTF = Compulsory Turning Flags



**CAICh 2\* Bühl GER  
Marathon  
10.06.2023**

**Michael Mayer** |   
Course Designer michael-mayer.ch

**Section Times**

Competition: CAICh 2\* P1

**PONYS**

Section	Distance	Pace	Speed	MT	TA		CTF
<b>In Harness Examination</b>							
<b>A</b>	4400 m	free	12 km/h	<b>20 min 00 sec</b>	<b>22 min 00 sec</b>		1
<b>Halt</b>				10 min			
<b>Warm Up Obstacle</b>				2 min			
<b>B O 2-6</b>	6530 m	free → after H7 walk or trot	13 km/h	<b>27 min 08 sec</b>	<b>30 min 08 sec</b>		1A - 6
<b>CoolDown</b>							
<b>In Harness Examination</b>				10 min	15 min		

TA = Time Allowed / MT = Minimum Time / CTF = Compulsory Turning Flags